

Hot Spot Public Access Point

RA-495

- Main Technical Specification**
- Radio Module Wi-Fi Standard
 - IEEE802.11bg
 - Bitrate 54Mbps
 - 2 Antenne Sprinter removibili con Diversity (RP SMA)
 - WAN Port: 1x10BASE-T/100BASE-TX RJ-45
 - LAN Port: 4x10BASE-T/100BASE-TX RJ-45
 - Plug and Play: Zero End-User Configuration
 - Concurrent Users: Up to 100
 - Rich Networking Functions

- NAT
- SMTP Server Redirect
- DNS
- Static IP WAN Connection
- DHCP Client WAN Connection
- PPPoE WAN Connection
- PPTP Client WAN Connection
- DHCP Server and DHCP Relay
- Transparent HTTP Proxy Support
- Bandwidth Control per user
- Session Control per user
- DDNS
- NTP Client

- Management**
- Web-based Management Tool
 - TFTP/HTTP Firmware Upgrade
 - Wizard setup for step-by-step Configuration
 - Backup / Restore Configuration File
 - Remote Authorized Management
 - Real-time Session List
 - LAN Device Management
 - Syslog (System/Subscriber/LAN device)
 - E-mail logs
 - SNMP v1/v2 (MIB II, Private MIB)

- User Accounting and Authentication**
- Web-Based Authentication
 - RADIUS AAA Support (RCF 2865,2866)
 - Secondary RADIUS
 - User Authentication and Accounting
 - Logout Window Timer Control

- Security**
- SSL User Login page / Configuration Page
 - Layer 2 Isolation Security
 - Pass Through IP/MAC/URL Address
 - VPN (IPSec/PPTP) Pass through
 - PPTP VPN Client
 - WEP
 - WPA

- Marketing Cooperation**
- Standard Login Page
 - Customizable log-on and log-off pages
 - Advertisement URL Link
 - Walled Garden
 - WISPr Smart Client

- Extra Functions with Thermal Printer**
- Local Authentication, Accounting, Billing



Optional Ethernet Printer

Tabella Comparativa

	RA-495	RA-595	RTS-800
802.11b/g	✓	✓	-
Antenna Connector	RP SMA	RP SMA	-
Antenna	2 x RP SMA	2 x RP SMA	-
Ant. Diversity	✓	✓	-
WAN	1 Port	1 Port	2 Port
LAN	4 port	4 port	2 port
Plug & Play	✓	✓	✓
Users	Up to 100	Up to 50 concurrent, 500 local, 2.000 on-demand	Up to 500 conc., 2.500 local, 2.000 on-demand
NAT	RFC 1631	(1)IP/Port Dest. Redirect (2)DMZ (3)Virtual Server	(1)DMZ (2)Virtual Server (3)IP/Port Dest. Redirect (4)H.323 Pass-Through
Multiple Network	-	✓	✓
Controllable LAN Port Requiring Auth.	-	✓	✓
Config. Static Route	-	✓	✓
SMTP Server Redirection	✓	✓	-
Session Trace	✓	✓	✓
User Authentication and Accounting	On-demand, Radius	Local and On-demand, POP3(S), LDAP, RADIUS, NT Domain	Local and On-demand, POP3(S), LDAP, RADIUS, NT Domain
Authentication Mode	✓	✓	✓
Web-Based Auth.	✓	✓	✓
RADIUS AAA support	✓	✓	✓
Real-time Session List	✓	✓	✓
L2 Isolation	✓	✓	✓
Pass Through	IP, MAC, URL address	IP, MAC, URL address	IP, MAC, URL address
Ticket Printer	✓	✓	-
Printer with display	-	✓	-
Web-based config. tool	✓	✓	✓
Wizard setup	✓	✓	✓
SNMP Redirect Support	✓	✓	✓
Wall garden	✓	✓	✓
Power Requirement	External Power Adapter Output:5V,2A/PoE	External Power Adapter Output:12V,1,5A/PoE	Integrated Power 90-264VAC
Dimension	242(L)x130.5(W) x112.6(H)	243(L)x 150(W) x45.5(H)	426(L)x270(W) x44(H)
Weight	420 g	1,4 Kg	6 Kg
Mounting	Desktop, Wall mounted	Desktop, Wall mounted	19" 1U Rack Mount

Tutte le specifiche tecniche fornite sono da considerarsi indicative. Le specifiche tecniche del prodotto possono non corrispondere con le descrizioni sopra riportate. Esse possono variare senza preavviso. I pesi e le dimensioni sono approssimativi. Le immagini incluse in questo catalogo sono da considerarsi a scopo puramente illustrativo e possono non corrispondere con il prodotto reale. L' utilizzo di questi apparecchi non è consentito senza i permessi delle Autorità Governative ed il rispetto delle Normative dello Stato in cui si intende utilizzarli.



RayTalk Industries Srl
via Nicolino di Galasso, 19 Galazzano 47899
Serravalle Republic of San Marino (RSM)
country code +378
telephone 0549-901170 fax 0549-900890
info@raytalk.com - www.raytalk.com



Hot Spot Total Solution
Authorization, Authentication, Accounting



WIRELESS SPECIALIST
Wi-Fi HIPERLAN

Wi-Fi HOT SPOT
GATEWAY

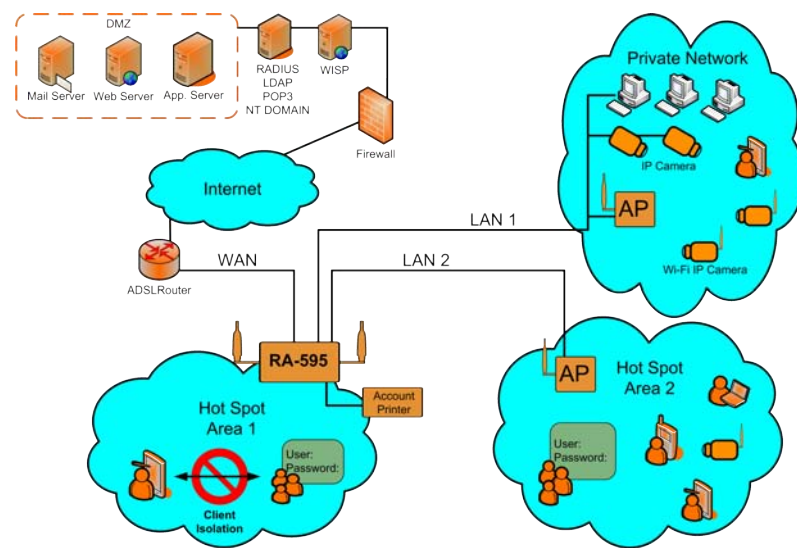


Hot Spot Public Access Point
Internet Subscriber Gateway

Hot Spot Public Access Point & Multi Network Access Control



Printer Included



RA-595

Main Technical Specifications

- Wi-Fi Standard Radio Module
- IEEE802.11bg
- Bitrate 54Mbps
- 2 removable Sprinter Antennas with Diversity (RP SMA connectors)
- WAN Port: 1 x 10BASE-T/100BASE-TX RJ-45
- LAN Port: 4 x 10BASE-T/100BASE-TX RJ-45
- Console Port: 1 x RJ-11

Networking

- Router, NAT mode
- Static IP, DHCP, PPPoE, PPTP Dial-up
- Controllable LAN ports requiring authentication
- IP Plug and Play (IP PnP)
- Inter-subnet roaming
- Built-in DHCP Server and support for DHCP relay
- Supports NAT:
 - IP/Port Destination Redirection
 - DMZ Server Mapping
 - Virtual Server Mapping
- Configurable static route
- SMTP redirection, Walled Garden (free surfing zone), MAC Address Pass-Through, HTTP Proxy

Management

- Up to 50 concurrent users, 500 local accounts, up to 2,000 on-demand accounts
- Guest accounts
- Supports 5 sets of black list with 40 entries in each black list
- Simultaneous support for multiple authentication methods (Local and On-demand accounts, POP3(S), LDAP, RADIUS, NT Domain)
- Role-based and policy-based access control (per-role assignments based on Firewall Policies, Routing, Login Schedule, Bandwidth, Quota, and Session Time)

Monitoring and Reporting

- Online status monitoring of users
- IP-based monitoring of devices
- WAN failure alert
- Syslog Information
- Supports external Syslog server
- User traffic history logging

User Session Management

- SSL protected login portal page
- Supports multiple logins with one single account
- Session idle timer
- Session/account expiration control
- Friendly notification email to provide a hyperlink to login portal page
- Windows domain single sign on
- Configurable login time frame

Accounting and Billing

- Built-in billing profiles for on-demand accounts
- Enables session expiration control for on-demand accounts by time (hour) and data volume (MB)
- Provides billing reports on screen for on-demand accounts
- Detailed per-user traffic history based on time and data volume for both local and on-demand accounts
- Traffic history report in an automatic email to administrator
- Support Authorize.net credit card payment
- Support PayPal payment

System Administration

- Web-based management UI
- Customizable login and logout portal page
- Support for SNMP v2
- SSH remote management
- Remote firmware upgrade
- NTP time synchronization
- Console CLI support
- Configuration file backup and restore

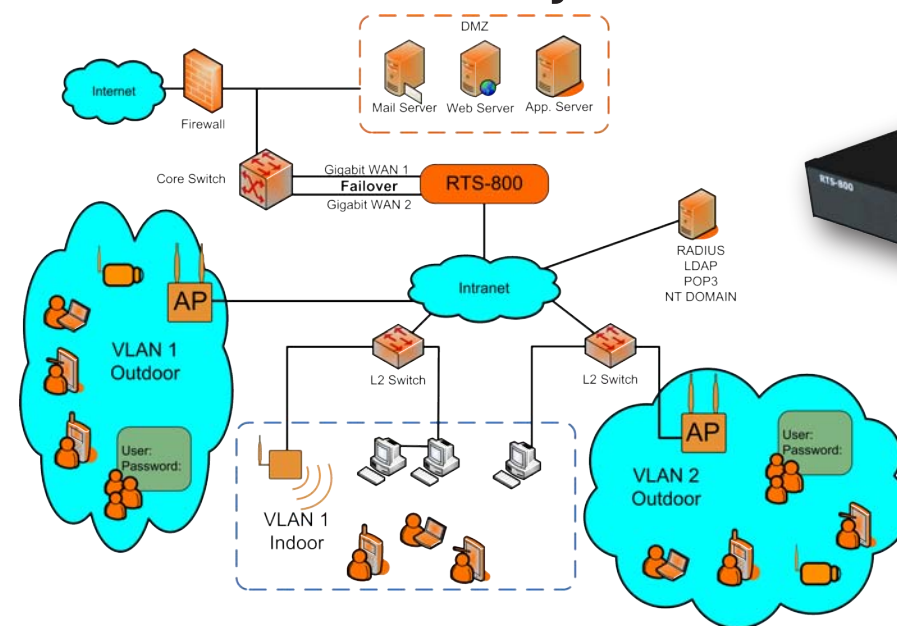
Security

- WEP(64/128-bit), WPA, WPA-PSK, IEEE 802.1x (EAP-MD5, EAP-TLS, CHAP, PEAP)
- VPN Pass-Through (IPSec and PPTP), DoS attack protection, Layer 2 isolation, MAC Access Control List, Configurable user Black List
- Allows MAC address and user identity binding for local user authentication

RTP-595 Printer

- Thermal line printing, 12x24 Alphanumeric Character, 1,41x3 Character size, 57,5x80mm Paper roll, RS-232C and Centronics Interface, 400g Weight, 126x200x117mm External dimension.

Subscriber Gateway



RTS-800

Main Technical Specification

- Form Factor: 19" 1U Rack Mount
- Dimensions (W x D x H): 426 mm x 270 mm x 44 mm
- WAN Ports: 2 x 10/100/1000 BASE-T RJ-45
- LAN Ports: 2 x 10/100/1000 BASE-T RJ-45
- Console Port: 1 x RS-232 DB9
- LED Indicators: 1 x Power, 1 x Link Status, 4 x Ethernet Connect
- LCD Panel: 16 Characters x 2 Lines

Networking

- Bridge, Router, NAT mode
- VLAN Tagging (IEEE 802.1q)
- Supports Static IP, DHCP, and PPPoE mode on WAN interface
- Supports configurable authentication for each LAN port
- IP Plug and Play (IP PnP)
- Inter-subnet roaming
- Built-in DHCP server and support for DHCP relay
- Supports NAT:
 - DMZ Server Mapping
 - Virtual Server Mapping
 - IP/Port Destination Redirection
 - H.323 Pass-Through
- Static route
- SMTP redirection, Walled Garden (free surfing zone)
- MAC Address Pass-Through, HTTP Proxy
- Supports failover on dual WAN ports

Management

- Up to 500 concurrent users, 2,500 local accounts, up to 2,000 on-demand accounts
- Simultaneous support for multiple authentication methods (Local and On-demand accounts, POP3(S), LDAP, RADIUS, NT Domain)
- Policy-based access control (including Firewall policies, Routing, Login Schedule, and Bandwidth)
- Role-based access control (based on policy setup from above)
- User Session Management:
 - SSL protected login portal page
 - Supports multiple logins with one single account
 - Session idle timer
 - Session/account expiration control
 - Notification email to provide a hyperlink to login portal page
 - Windows domain transparent login
 - Configurable login time frame

Accounting and Billing

- Support for RADIUS accounting, RADIUS VSA (Vendor Specific Attributes)
- Provides API for Micros-Fidelio PMS (Property Management System)
- Built-in billing profiles for on-demand accounts by time (hour) and data volume (MB)
- Enables session expiration control for on-demand accounts by time (hour) and data volume (MB)
- Detailed per-user traffic history based on time and data volume for both local and on-demand accounts
- Traffic history report in an automatic email to administrator
- Support Authorize.net credit card payment

Monitoring and Reporting

- Status monitoring of on-line users
- IP-based monitoring of network devices
- WAN connection failure alert
- Supports syslog for diagnosing and troubleshooting
- User traffic history log

System Administration

- Web-based management UI
- Customizable login and logout portal page
- SSH remote management
- Remote firmware upgrade
- NTP time synchronization
- Console management interface support
- Backup and restore of system configuration
- Configurable redirected home page

Security

- WEP (64/128-bit), WPA, WPA2, WPA-PSK, WPA2-PSK, IEEE 802.1x (EAP-MD5, EAP-TLS, CHAP, PEAP)
- VPN Pass-Through (IPSec and PPTP), DoS attack protection
- MAC Access Control List, User Black List
- Allows MAC address and user identity binding for local user authentication